

# MD20-Design "80" Manually Operated Monoblock Valves



## FEATURES

- \* Adjustable Balanced Piston Relief Valve
- \* Power Beyond / Closed Center Available
- \* Integral Load Holding Check Valve
- \* Optional Pilot Operated Check Valves
- \* Single / Double acting & Motor spools
- \* Spring Return or Detent

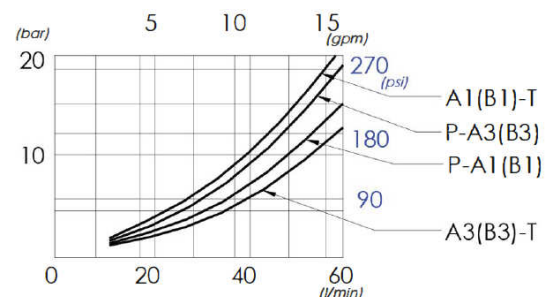
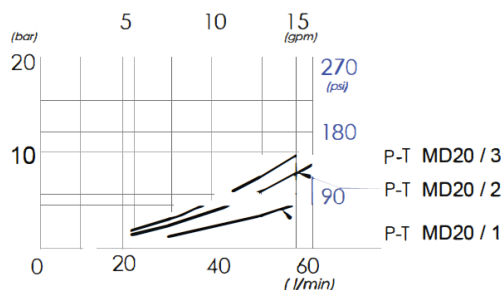


## MD20 ORDERING CODE

<b>MD 20</b>	<b>1</b>	<b>C</b>	<b>S</b>	<b>D</b>	<b>P</b>	<b>80</b>	
Monoblock Valve	Valve Series 20 = 15 GPM	Number of Spools 1 = 1 Spool 2 = 2 Spools 3 = 3 Spools	Spool Type C = Double Acting M = Motor Spool	Port Type S = SAE (Std) N = NPT *Factory Lead Time B = BSP *Factory Lead Time	Spool Function No Code = Spring Return D = Deterent	Tank Port No Code = Open Center C = Closed Power P = Power Beyond	Design Number

Monoblock	MD20
Maximum Flow	15 US gpm (57 l/min)
Recommended Flow	12 US gpm (45 l/min)
Maximum Pressure	4568 PSI (315 bar)
Maximum Back Pressure	145 PSI (10 bar)
Leakage @ 1500 PSI (100 bar)	2 cm <sup>3</sup> /min
Weight MD50-1	6.6 lbs (3 kg)
Weight MD50-2	10.6 lbs (4.8 kg)
Weight MD50-3	14.2 lbs (6.45 kg)

Valve Ports			
Thread	Port - A&B	Thread	Thread
SAE	SAE-10	SAE-12	SAE-12
NPT	1/2"	3/4"	3/4"
BSP	1/2"	3/4"	3/4"

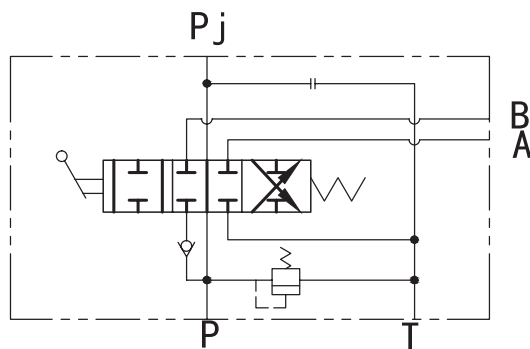
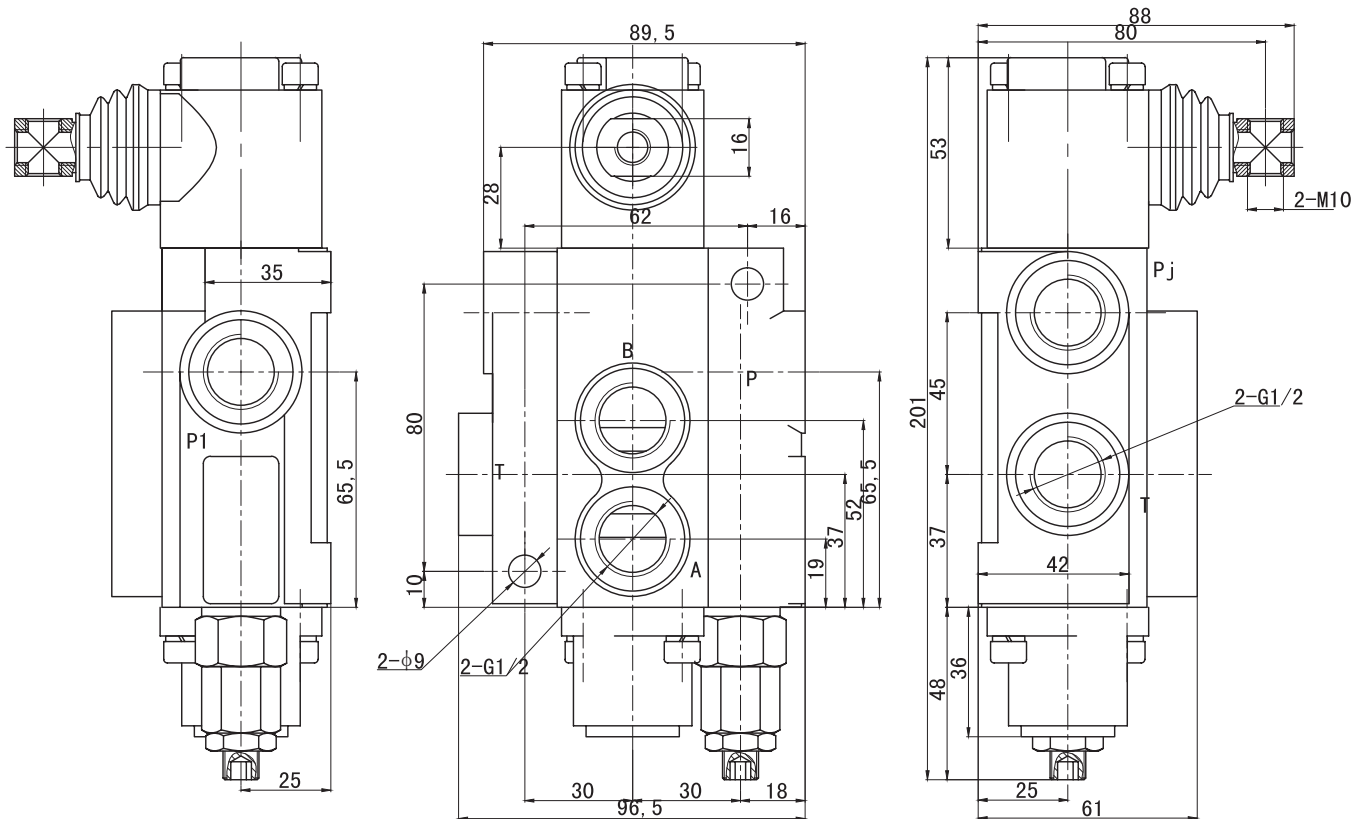


Pressure Drop

# MD20 SINGLE SPOOL DIMENSIONAL DRAWING

## Monoblock Directional Control Valve

Dimensions: mm



**New 80 Design**

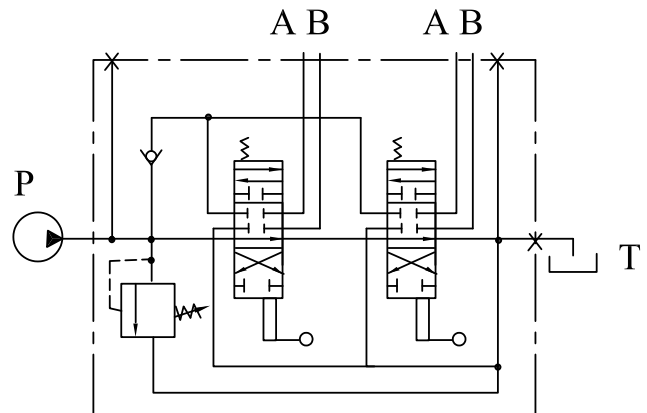
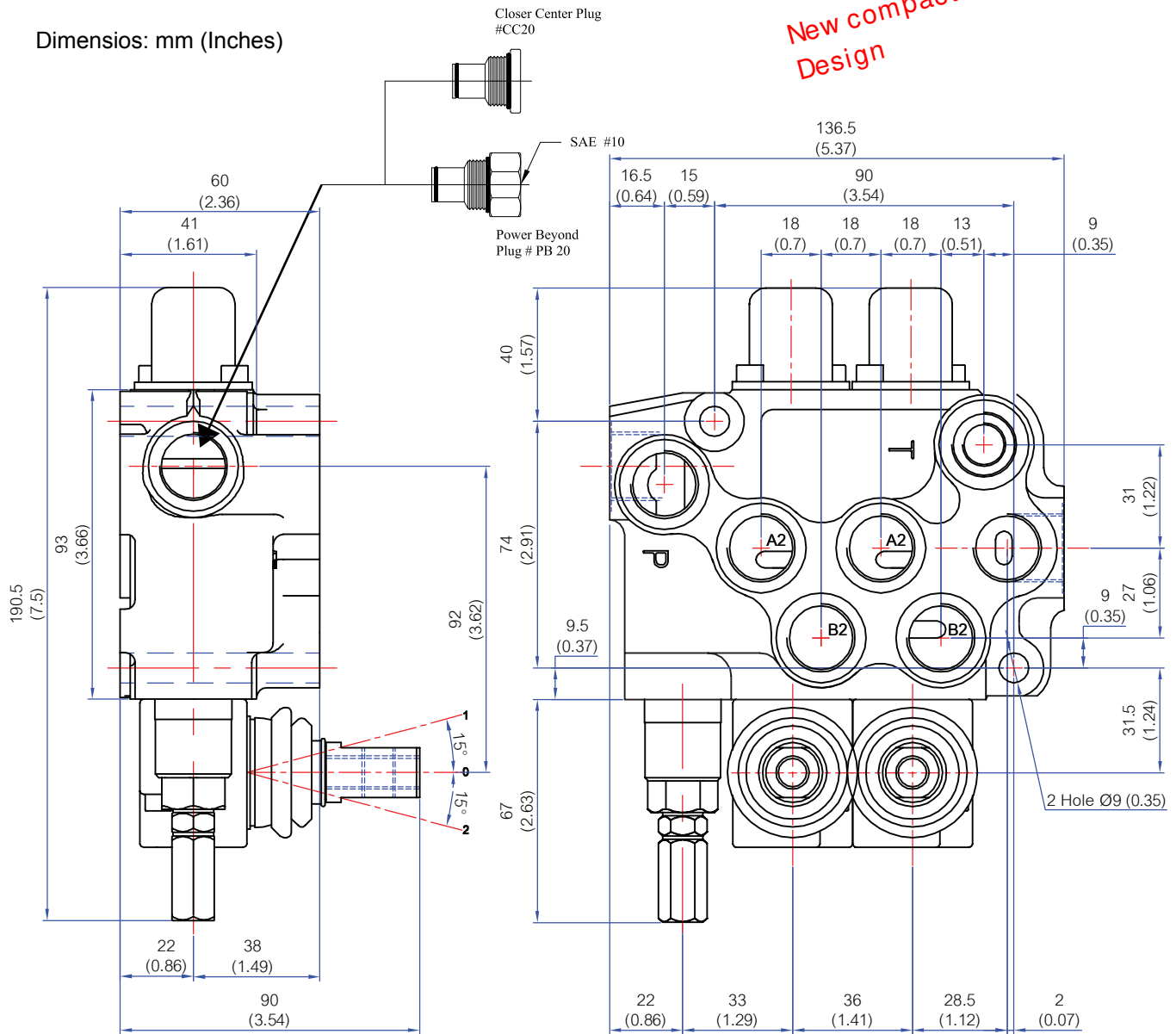
Note: Special features not listed can often be made to your specifications. Please consult your sales representative

# MD20 MANUALLY OPERATED MONOBLOCK VALVE "Double Spool"



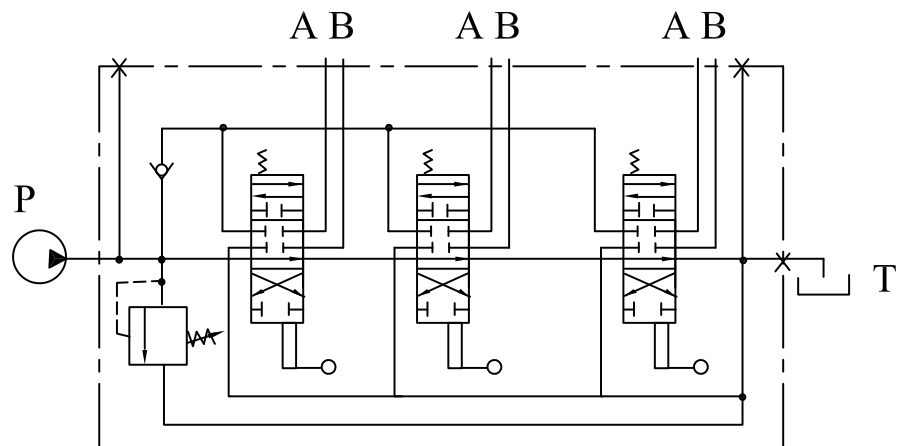
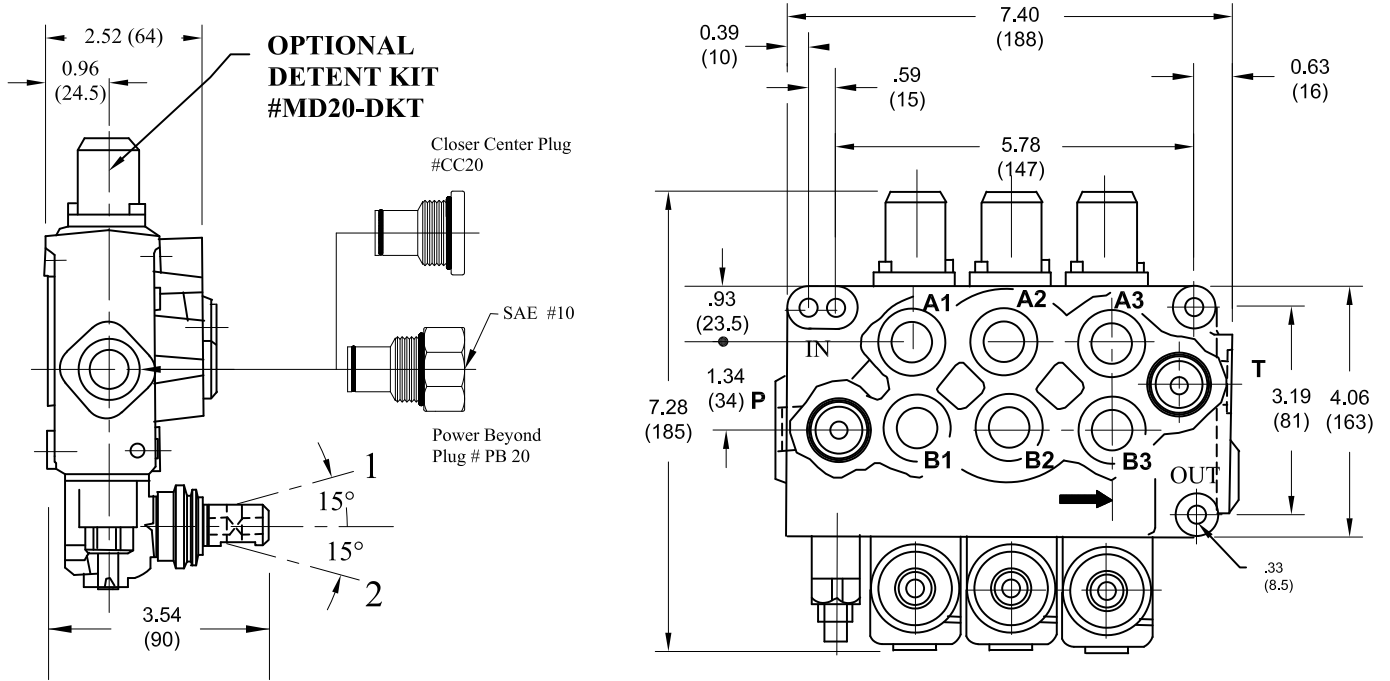
Dimensiones: mm (Inches)

*New compact Design*



F6.3

# MD 20 MANUALLY OPERATED MONOBLOCK VALVE "TRIPLE SPOOL"







INDUSTRIAL SUPPLY AND SERVICES S. DE R.L. DE C.V.

